

## Phospho-4E-BP1 (Thr45) Ab

Cat.#: AF7376	Concn.: 1mg/ml	Mol.Wt.: 12kDa
Size: 50ul,100ul,200ul	Source: Rabbit	Clonality: Polyclonal

**Application:** WB 1:500-1:2000, IHC 1:50-1:200

**Reactivity:** Human,Mouse,Rat

**Purification:** The Ab is from purified rabbit serum by affinity purification via sequential chromatography on phospho- and non-phospho-peptide affinity columns.

**Specificity:** Phospho-4E-BP1 (Thr45) Ab detects endogenous levels of 4E-BP1 only when phosphorylated at Thr45

**Immunogen:** A synthesized peptide derived from human 4E-BP1 around the phosphorylation site of Thr45

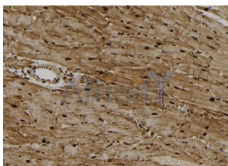
**Uniprot:** Q13541

**Similarity:** The TOS motif mediates interaction with RPTOR, leading to promote phosphorylation by mTORC1 complex.Belongs to the eIF4E-binding protein family.

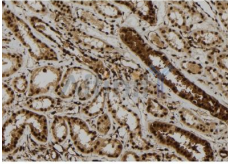
**Storage Condition and Buffer:** Rabbit IgG in phosphate buffered saline , pH 7.4, 150mM NaCl, 0.02% sodium azide and 50% glycerol.Store at -20 °C.Stable for 12 months from date of receipt



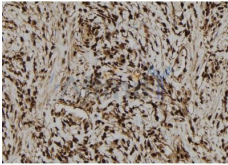
Western blot analysis of Phospho-4E-BP1 (Thr45) in lysates of Jurkat Insulin 0.01U/ml 15', using Phospho-4E-BP1 (Thr45) Ab(AF7376).



AF7376 at 1/100 staining rat heart tissue sections by IHC-P. The tissue was formaldehyde fixed and a heat mediated antigen retrieval step in citrate buffer was performed. The tissue was then blocked and incubated with the Ab for 1.5 hours at 22°C. An HRP conjugated goat anti-rabbit Ab was used as the secondary.



AF7376 at 1/100 staining human kidney tissue sections by IHC-P. The tissue was formaldehyde fixed and a heat mediated antigen retrieval step in citrate buffer was performed. The tissue was then blocked and incubated with the Ab for 1.5 hours at 22°C. An HRP conjugated goat anti-rabbit Ab was used as the secondary.



AF7376 at 1/100 staining human gastric cancer tissue sections by IHC-P. The tissue was formaldehyde fixed and a heat mediated antigen retrieval step in citrate buffer was performed. The tissue was then blocked and incubated with the Ab for 1.5 hours at 22°C. An HRP conjugated goat anti-rabbit Ab was used as the secondary.

**IMPORTANT:** For western blot, incubate membrane with diluted Ab in 5% w/v milk , 1X TBS, 0.1% Tween@20 at 4°C with gentle shaking, overnight.

For Research Use Only. Not for use in diagnostic and therapeutic procedures. Not for resale without express authorization.